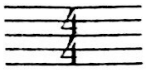
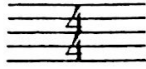
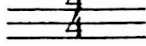


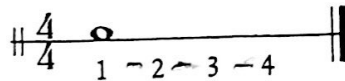
TIME SIGNATURES AND NOTE VALUES

TIME SIGNATURES are placed at the beginning of a piece of music. They contain two numbers that show the number of beats (or counts) in each measure and the kind of note that receives one beat.

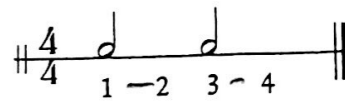
 The top number shows the number of beats (or counts) in each measure.
The bottom number shows what kind of note gets one beat.

 means four beats in each measure.
 means a quarter note (♩) gets one beat.

In $\frac{4}{4}$ time, a whole note receives four beats.



A half note receives two beats.



A quarter note receives one beat.



Name _____
Date Received _____
Date Due _____

1. First count the beats. You may wish to tap your foot on each beat. Then clap the rhythm of the notes while counting the beats.



2. Write in the beats under the notes indicated — remember, there are four beats in each measure.



3. Count the beats and clap the rhythm of all of the lines above.

4. Add the bar lines in the following example.



5. Count the beats and clap the rhythm of the line above.

LESSON 11 ANOTHER TIME SIGNATURE

3/4 TIME

Name _____

Date Received _____

Date Due _____

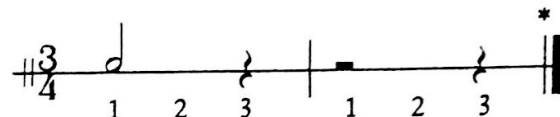


The top number shows the number of beats (or counts) in each measure.
The bottom number shows what kind of note gets one beat.



means three beats in each measure.
means quarter note gets one beat.

In 3/4 time, a half note or rest receives two beats.



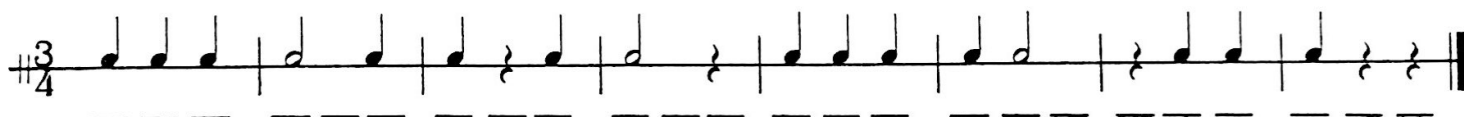
A quarter note or rest equals one beat.



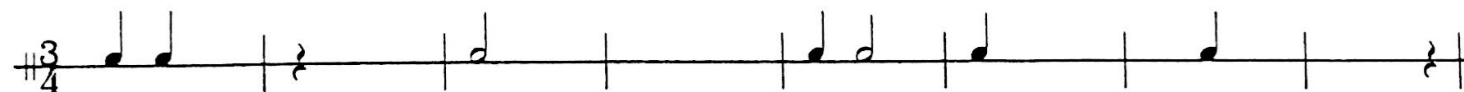
1. Count the beats, then clap the rhythm of the notes and rests.



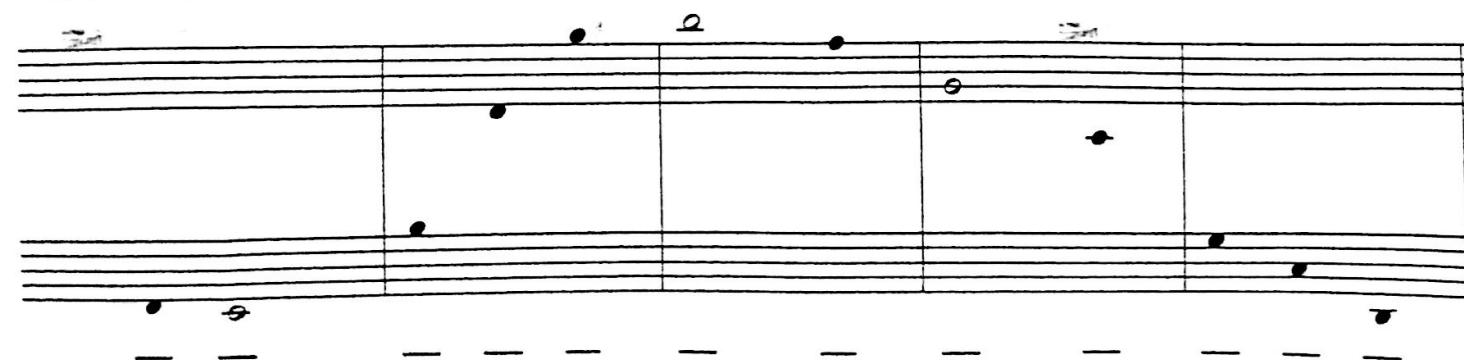
2. Write the beats under the notes. Remember, there are three beats in each measure.
3. Count the beats and clap the rhythm.



4. Fill in the missing beats with notes or rests, then clap the rhythm.



5. Draw the brace, treble clef, bass clef and a 3/4 time signature. Then name the notes and add stems where needed.



*In actual music notation a whole rest is used to indicate a whole measure of rest regardless of the time signature.